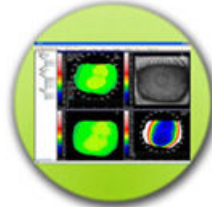


# CORNEAL TOPOGRAPHER OCT 2000



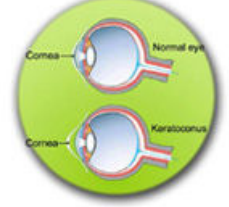
## Details



Topographer Function

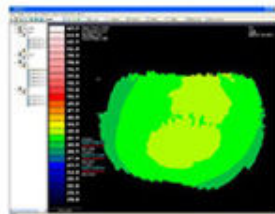


Contact Lenses Fitting Function

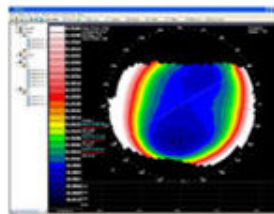


Keratoconus Screening Function

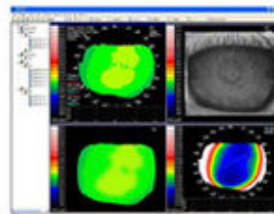
## User Interfaces



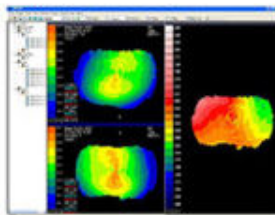
Main interface



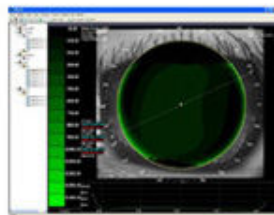
Elevation Map



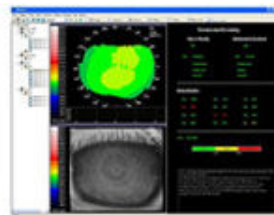
Combination View



Compare View



Contact Lenses Fitting



Keratoconus Screening

## Specifications

<b>Measuring method</b>	Placido cone
<b>Coverage</b>	0.25mm-11mm(Diameter)
<b>Measuring range for curvature radius</b>	6.35mm-9.53mm
<b>Field of view</b>	11mm H x 11mm V
<b>Illumination source</b>	<b>Cone:</b> 760nm red LED - <b>Profile:</b> non-visible infrared 950nm red LED <b>Fixation:</b> 530nm green LED
<b>Diopter range</b>	28.0-65.5D
<b>Placido rings</b>	32 rings
<b>Measurement points</b>	11520
<b>Calibration ball</b>	R 7.9375mm±0.001mm
<b>Output</b>	Optional printer
<b>Dimensions / Weight</b>	36*38*45mm / 5Kg