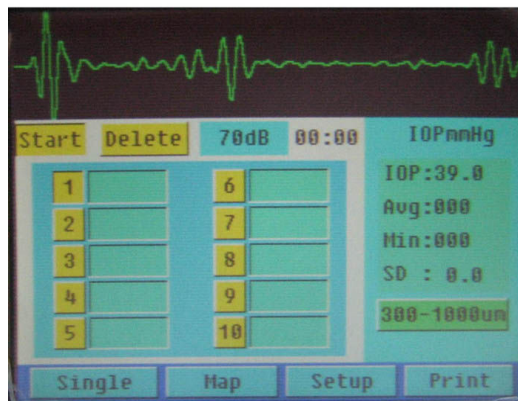
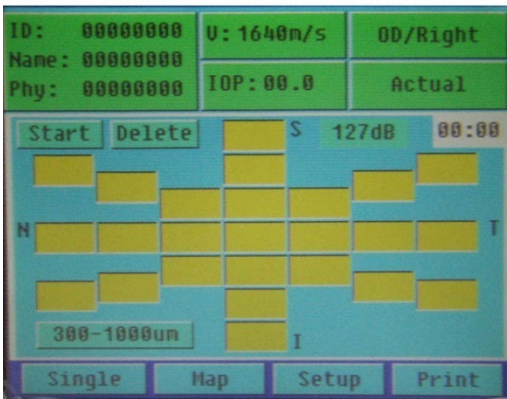


PACHYMETER OPA 1000



Specifications

Probe	10MHz, with LED
Depth	15mm-40 mm
Precision	±0.05mm
Examining Method	Immersion and contact
Eye Mode	Phakic/ Aphakic/Pseudo
IOL Formula	SRK-II, SRK-T, HOFFER-Q, HOLLADAY, BINKHORST-II, HAIGIS
Measurement	AL, ACD, L, V and the average
Curve Freeze	control by foot switch auto freeze and manual freeze.
Output	Build-in high speed thermal printer, print out A scan table and calculation
Store	10 cases(eyes), 5 reading each case
Display	Large LCD
Input	Touch screen
Power	30W